

**CERTIFIED LAND CORNER RECORDATION**

DESCRIPTION OF CORNER EVIDENCE FOUND, AND ORIGINAL RECORD (If known)

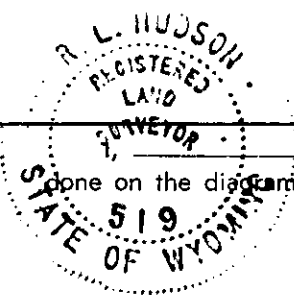
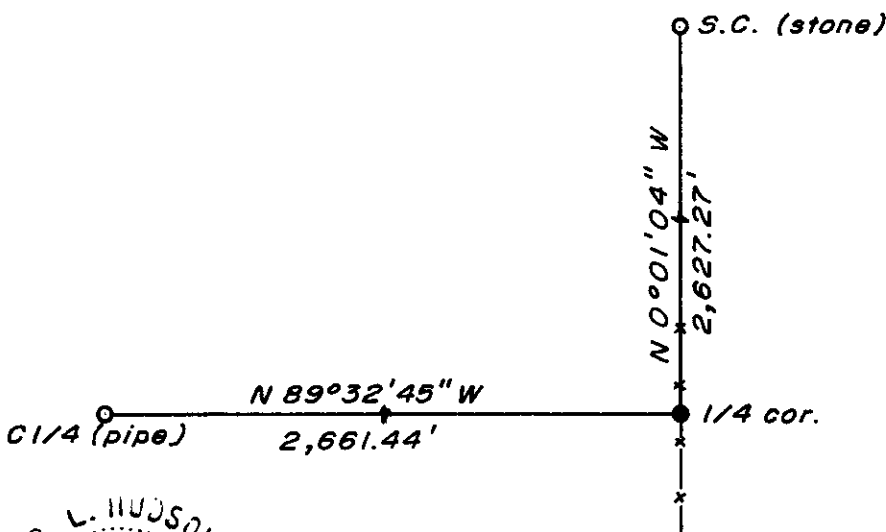
LOCATION                      Found a 1 1/4" dia. iron bar, origin unknown. Accepted as  
    corner monument. A granite stone, with "1/4" on west face  
    found west of corner monument (memorial).  
    G.L.O. record - Unknown.  
    6th P.M.

DESCRIPTION OF MONUMENT AND ACCESSORIES ESTABLISHED  
 TO PERPETUATE THE ORIGINAL LOCATION OF THIS CORNER:

At the corner:    Not remonumented.  
 Accessories:     Rebuilt rock mound alongside corner monument.

SKETCH, WITH COURSE AND DISTANCE TO ADJACENT CORNER IF DETERMINED IN THIS SURVEY.  
 (May Sketch or Paste Reproduction on Reverse Side.)

Basis of Bearing:    City of Cheyenne Datum.  
 Distances based on measurements by electronic means.  
 Coordinates:        (City of Cheyenne Datum)  
                               (x) = 635,574.42 feet;    (y) = 72,030.90 feet



R. L. Hudson \_\_\_\_\_ certify that I have carefully performed ~~or reviewed~~ the work done on the diagrammed corner as reported on this recordation form and approve the same.

*R. L. Hudson*                      Wyoming L.S. No. 519  
 Signature of Surveyor                      Registration No.

STATE OF WYOMING,  
 Office of Clerk and Recorder,  
 County of Saramie

511170

This "corner record" was filed for record on the 21 day of December, 19 78, was noted on the cross-index plat and is assigned page No. \_\_\_\_\_, in book No. \_\_\_\_\_.

\_\_\_\_\_  
 County Official

Cross Index No. _____	T. _____	R. _____	Mer. _____
<u>X-9</u>	T. <u>14</u>	R. <u>65</u>	Mer. _____
_____	T. _____	R. _____	Mer. _____
_____	T. _____	R. _____	Mer. _____
_____	T. _____	R. _____	Mer. _____
_____	T. _____	R. _____	Mer. _____
_____	T. _____	R. _____	Mer. _____

X-9      14-65

511170

Photographed..... ✓  
Indexed..... ✓  
Posted..... ✓  
Assessor.....